



PPAM Solkraft AB Veosol Energi AB

Andreas Molin

2025-03-04

PPAM – Perpetuum Automobile

Active since 2010



Veosol, over 30 years of energy optimization

As the saying goes, the Stone Age did not end because we ran out of stones; we transitioned to better solutions. The same opportunity lies before us with energy efficiency and clean energy.

- Steven Chu



1995-

The product portfolio is continuously expanded to include wood pellets burners and boilers, wood chip boilers and solar energy from electricity generation. These new businesses expand the scope of operations both in terms of customer segments as well as the geographical area

2016

Veosol moves into the new headoffice Boställsvägen 4 at Aspholmens Industriområde in Örebro

1991

The Company is started. The business does primarily consist of wood-fired boilers and solar thermal energy.



2013-15

The organic growth is supplemented by multiple acquisitions of complementary businesses

1990

1995

2000

2010

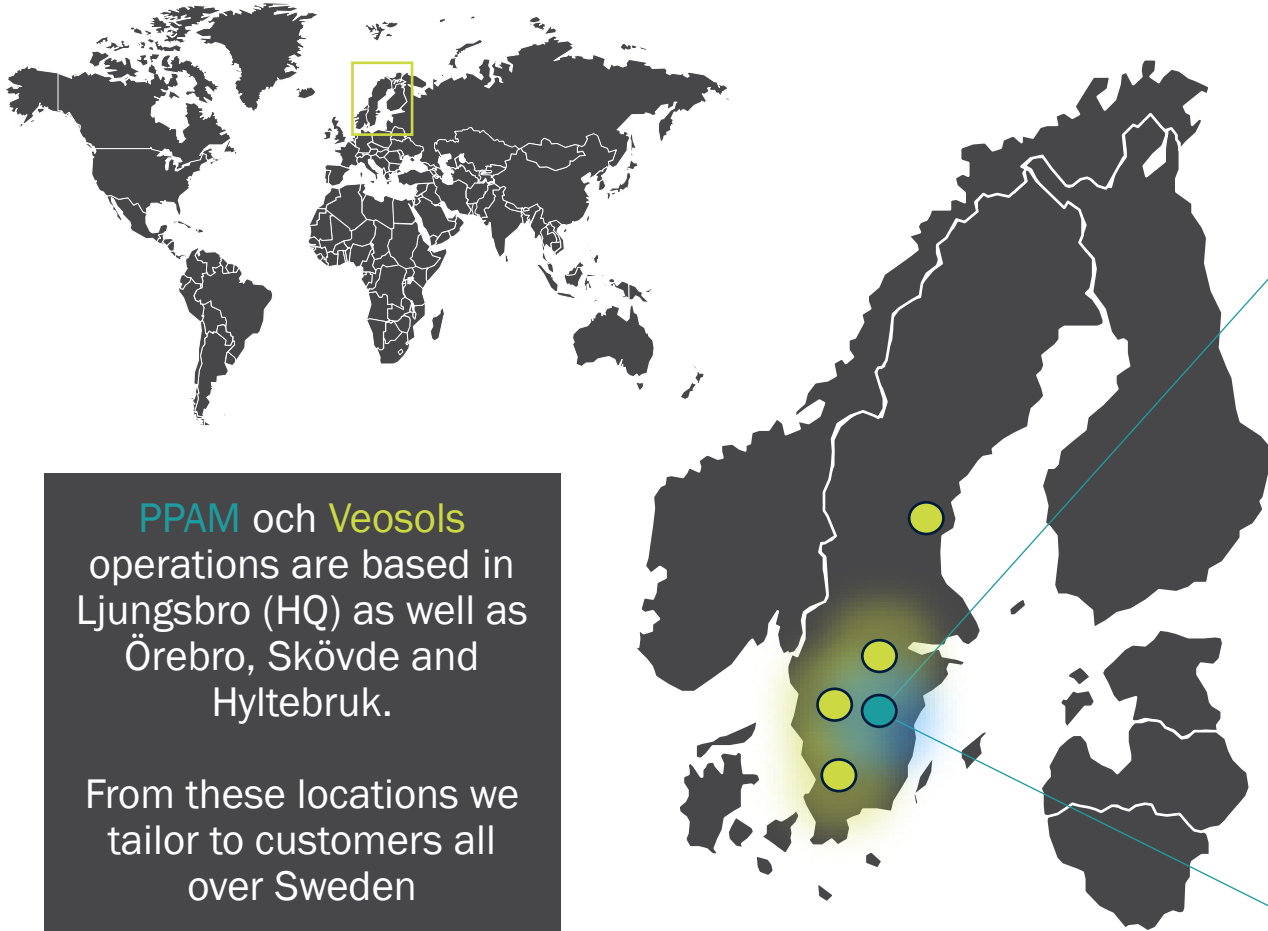
2015

Our DNA

“Ensuring a sustainable future, by being the **best enabler** of renewable energy solutions”

"True **sustainability**, to reduce our environmental footprint with the world's population – **together**"

Operations.



Ljungsbro, Linköping



PPAM och Veosols operations are based in Ljungsbro (HQ) as well as Örebro, Skövde and Hyltebruk.

From these locations we tailor to customers all over Sweden

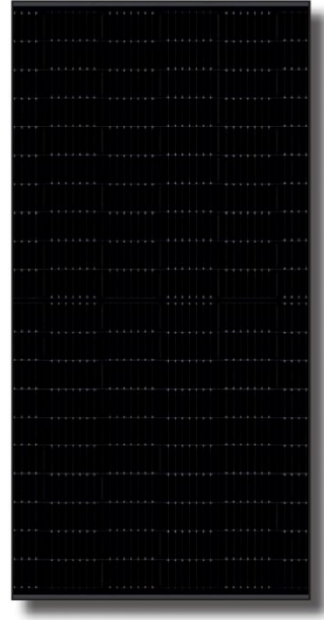
Safety first.

Our safety principles

- I take responsibility
- No excuses
- No shortcuts
- No repeats

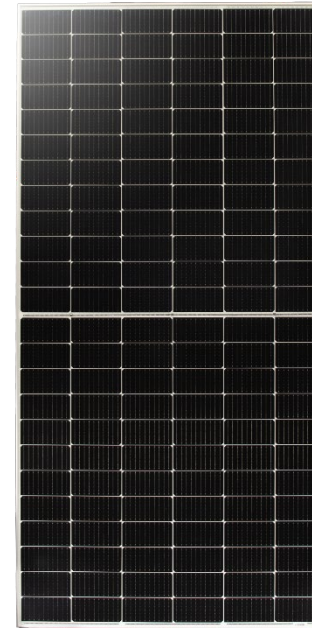


In-house developed solar panels.



Onyxium Nano

Monocrystalline silicon for high efficiency and stylish roofs!



Transparium

Double-sided and semi-transparent for maximum efficiency and flexibility!

Personnel.

A fair workplace with the best colleagues.

We believe that success is built on motivated and proud employees. To achieve this, the right skills and opportunities for development are required.

We also believe that diversity and equality contribute to a better work environment. Fundamentally, it is about being an attractive employer – it should simply be fun and developmental to work at PPAM Solkraft.



What is most important to you?

Or is it:

Quality and reliability?

Service?

Quick answers and personal service?

Competence and experience?

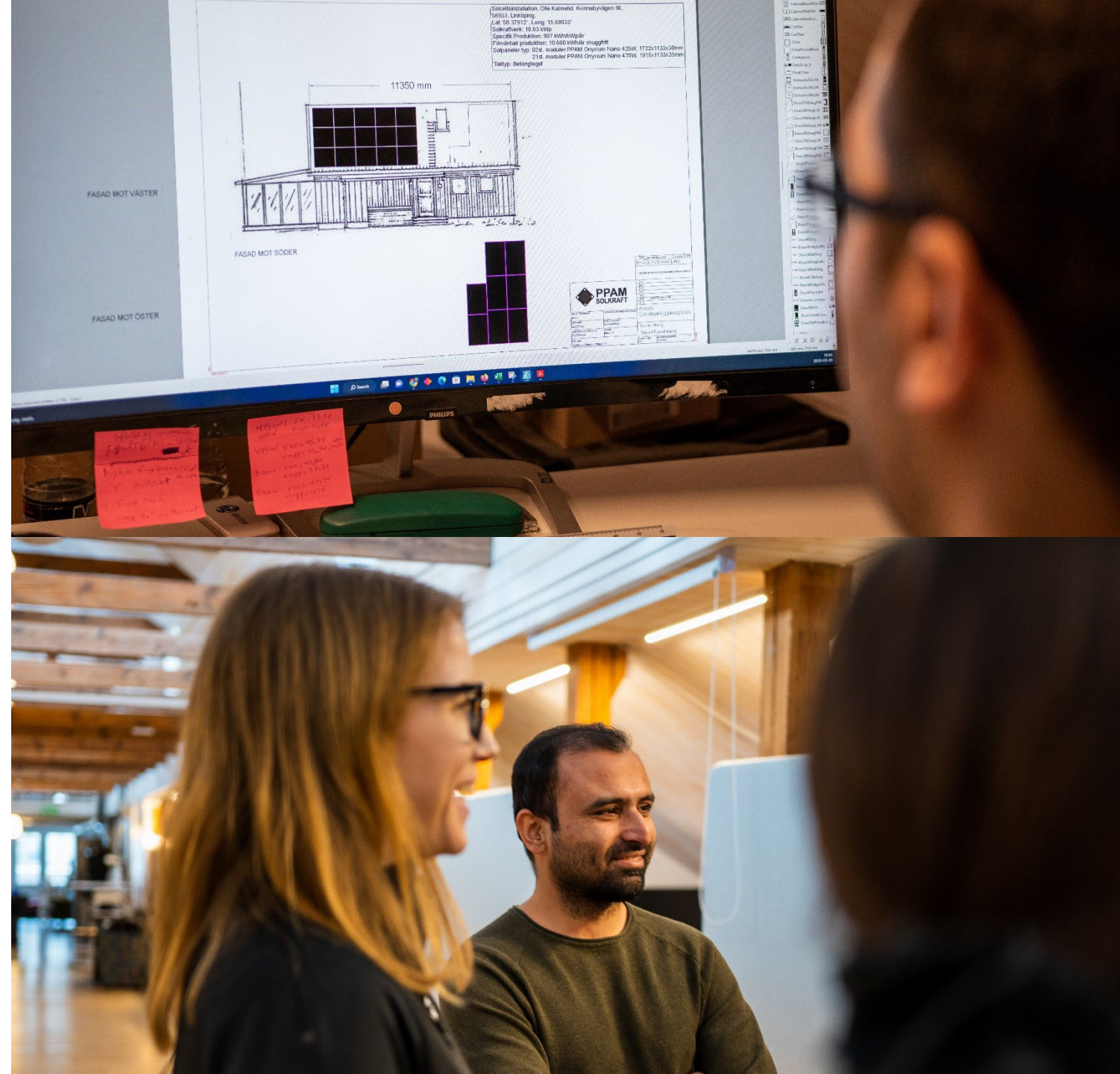
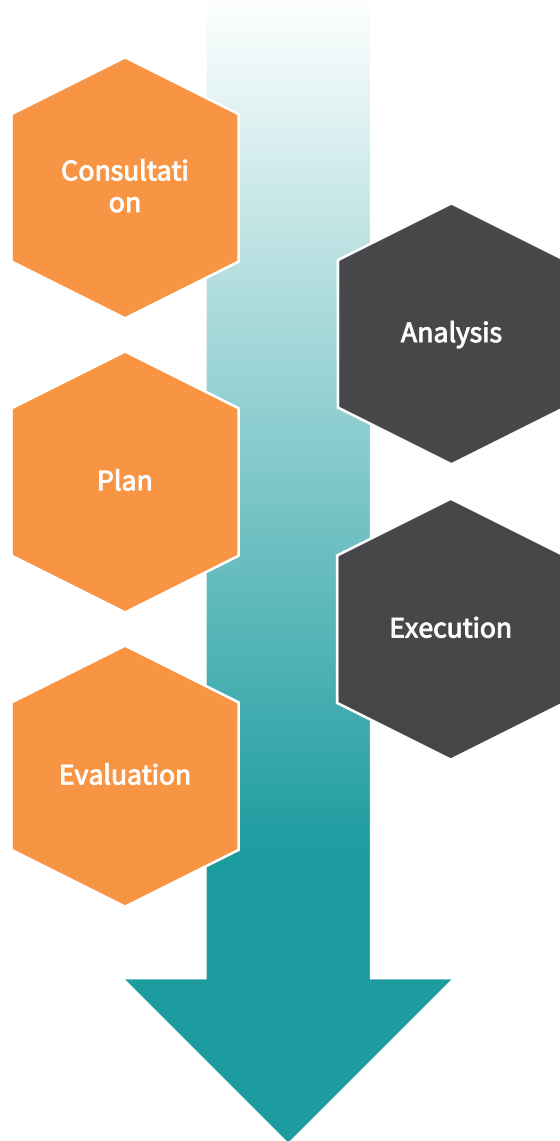
Cost efficiency?

Solution tailored to specific needs

Easy to deal with?

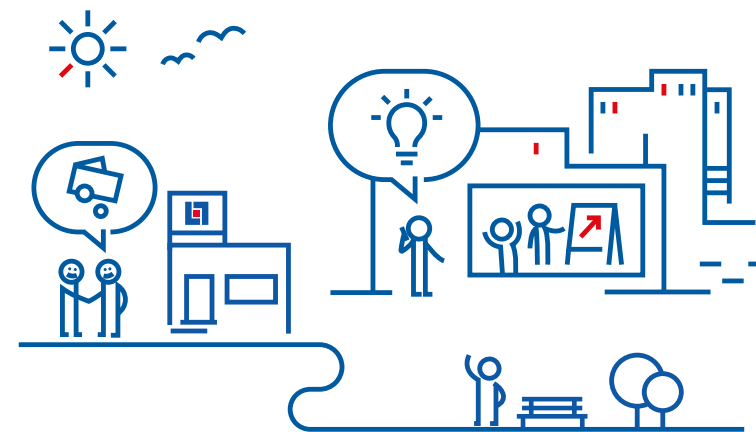


Our process



Finance your investment

- Simple and secure financing through Wasa Kredit
- Wasa Kredit is wholly owned by Länsförsäkringar Bank, which is owned by the 23 local Länsförsäkringar companies, which in turn are owned by their insurance customers
- Offers investment solutions for companies and investments in (among other things) solar cells, bioenergy, and energy storage
- Investment options are also available for private investments in green technology with interest-free short-term loans or personal loans



References solar

Home installations.

Sturefors, outside Linköping

Turnkey solar power systems

We sell complete solar panel packages with full responsibility. This means that we are with you throughout the entire process, so you can be sure that you get the very best solution for your home and your needs.



Farm.

Linköping

Economy on the roof

No agricultural land or nature should be used for solar power installations. The roof areas that exist are sufficient for a long time to come.



Housing Association.

Linköping

A good economy – over many years.

Solar panels for housing associations mean, for example, lower monthly costs, a strengthened environmental profile, more attractive apartments, and less vulnerability to electricity price increases.

Together with shared electricity, there are great opportunities for savings, while at the same time contributing to the climate by producing your own locally-produced renewable electricity.



Returpack.

Norrköping

+30% energy production

By combining reflective roof paint with double-sided solar panels at the optimal angle and with the correct spacing, a solar energy installation is created that is more than 30% more efficient than a corresponding traditional system.



Engströms Bil.

Linköping

More energy for a longer time during the day

The combination of traditional roof mounting, which provides the most energy during midday, with a frame of double-sided solar panels, which generates more energy in the morning and evening, extends the time the system can generate energy.



Fokusområden PPAM 2025

TURN
AROUND

AFFÄR	PROCESS	SYNERGIER
Ny organisation		
Fokus entreprenad	Gemensamt ERP	
Utökad produktportfölj / Merförsäljning	Kostnadskontroll	Ny operativ modell
	Likviditetskontroll	

Fokusområden Veosol 2025

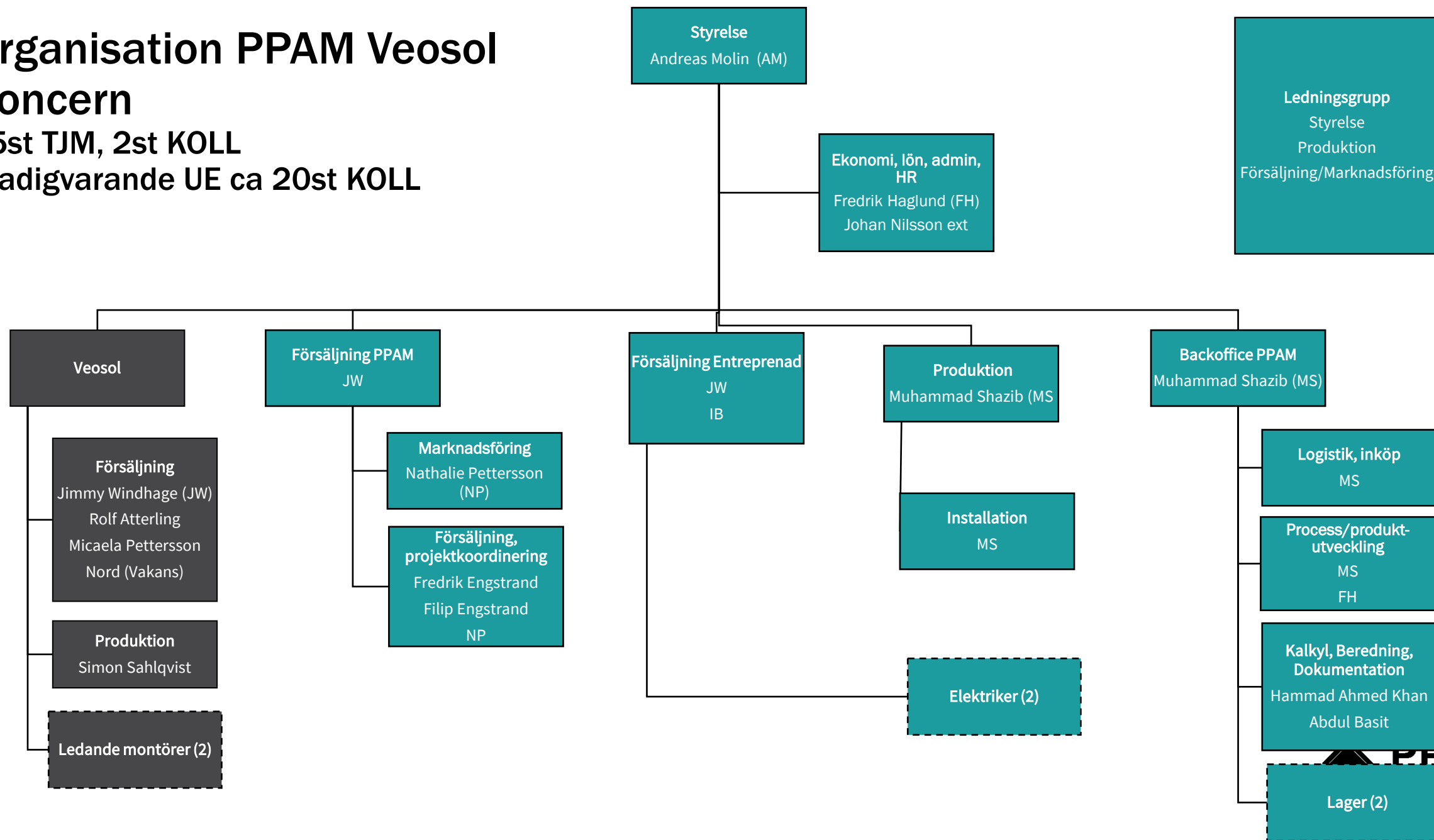
AFFÄRSUTVECKLING	PROCESSUTVECKLING	FILIALER
Marknadsutveckling	Ny organisation	Skaraborg
Erbjudande 2.0	Synergier PPAM	Halland/Skåne
	Kostnadskontroll	

EBIT
>3 000
kSEK

Organisation PPAM Veosol Koncern

15st TJM, 2st KOLL

Stadigvarande UE ca 20st KOLL



Is Veosol 2025

RESULTATRÄKNING VEOSOL (KSEK)	2022	2023	2024(ext 16 mnts)	FC2025
RÖRELSENS INTÄKTER	19 428	41 181	47 636	95 802
RÖRELSENS KOSTNADER	-12 132	-25 746	-29 232	-66 732
Inköp av varor	-9 711	-22 397	-23 930	-54 706
Underentreprenörer	-1 488	-2 440	-4 048	-8 623
Inhyrd personal	-831	-504	-1 173	-3 403
Inhyrd utrustning	2	-241	-81	0
Övriga rörliga kostnader	-104	-164	0	0
BIDRAG TILL FASTA KOSTNADER	7 296	15 435	18 404	29 070
FASTA OPERATIVA KOSTNADER	-6 222	-10 086	-13 179	-12 185
Personalkostnader	-4 320	-8 005	-8 533	-4 839
Bilar	-401	-809	-1 501	-1 771
Avskrivningar	-55	-136	-230	-227
Övriga operativa kostnader	-1 446	-1 136	-2 915	-5 327
BIDRAG TILL SG&A	1 074	5 349	5 225	16 885
FÖRSÄLJNINGSKOSTNADER	-172	-1 454	-2 211	-5 675
LEDNINGS- OCH ADMINISTRATIONSKOSTNADER	-175	-2 082	-2 298	-4 841
VALUTAEFF FODRINGAR OCH SKULDER	-137	-195	-34	0
RÖRELSERESULTAT	590	1 618	682	6 368
	3%	4%	1%	7%
FINANSIELLA POSTER	-174	-382	-450	-849
SKATT	-105	-506	-140	-1 296
RESULTAT	311	730	92	4 223
	2%	2%	0%	4%

Försäljningsbudget 2025

Segment	Storlek	Enhet	Värde (kSEK)	Antal per år	FSG per år (kSEK)
Sol Villa normal	<11	kWp	138	49	6 762
Sol Villa stor	12-20	kWp	210	56	11 760
Sol & energilager villa	11 + 4	kWp + kWh	200	107	21 400
Energilager retrofit	4-10	kWh	60	182	10 920
Energilager retrofit	11-20	kWh	120	126	15 120
Lantbruk/fastighet	21-43	kWp	420	44	18 480
Industri/fastighet	>70	kWp	1000	8	8 000
Fristående energilager	>100	kWh	1500	2	3 000
Elbilsaddare			15	24	360
					95 802